

## Kitting and Packaging Jim2® Business Engine

# Fact Sheet

### Product Kitting

Kitting and Packaging lets Jim2® users combine a range of inventory components into a 'bundle' when quoting or selling (unlike Bill of Material Manufacturing, which creates a specific stock line from a list of raw materials).

Jim2® includes three different ways to kit products together:

- Dynamic Kitting, which allows you to drag-and-drop products in an ad hoc fashion into and out of the kit frame when quoting or selling. Customers can return individual components from the kit for replacement or credit.
- Static Kitting or 'Just-in-time manufacturing', which does not allow ad hoc changes to the kit's content when quoting or selling. Customers must return the whole kit for replacement or credit.
- Packaging products together to create quantity-on-hand of uniquely identified kits.

Kitting allows you to set up default components and/or build 'on the fly'. Kitting also allows you to choose what a customer sees on a quote or invoice.

### Kitting Configurator

The Jim2® Kitting Configurator allows you to set up choices or alternative suggestions within a product range for the kit.

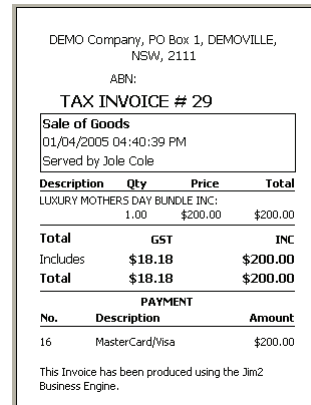


### Kit Selling Price

Kit selling prices can be calculated automatically by Jim2® (adds up the selling price on each stock line used in the kit), or set as an overall kit level (apportions profit between all contents).

+	Status	Stock Code	Description	Unit	Order	Supply	B. Ord	Price TF	Price T	Total
1		MDOFFER.1	Luxury Mothers Day Bundle	UNIT	1	1	0	181.82	200.00 G	200.00
2		DICKIES.T1	High Quality (540 thread count) Bath Sheet	UNIT	2	2	0	38.15	41.96 G	83.92
3		DICKIES.G1	High Quality Bathrobe (340 thread count)	UNIT	1	1	0	69.93	76.92 G	76.92
4		DICKIES.F1	High Quality Face Washer (240x240)	UNIT	2	2	0	15.25	16.78 G	33.56
5		HANDMADE.GL.110	Handmade glycerine Soap - Lavendar (110gram bar)	UNIT	1	1	0	5.09	5.60 G	5.60
6										200.00

Individual kit components can be set/changed to 'show or hide' on quotes or invoices.



In a quote, you can choose numerous kits and recommend specific contents.



13/04/2005  
 Barry Allen  
 Checkers Printers Pty Limited  
 Ph: 02 9985 8585  
 Fax: 02 9985 2252  
 Our Ref: 6  
 Valid To: 13/05/2005

#### Re: Sale of Goods

Dear Barry

Thankyou for your enquiry on our great Mothers Day bundles! I have included pricing on two different bundles for your consideration.

- LUXURY MOTHERS DAY BUNDLE: 1 \$280.00 \$280.00
  - 1x High Quality Bathrobe (340 thread count)
  - 1x Handmade glycerine Soap - Lavendar (110gram bar)
  - 2x High Quality (540 thread count) Bath Sheet
- LUXURY MOTHERS DAY BUNDLE: 1 \$150.00 \$150.00
  - 1x High Quality (540 thread count) Bath Sheet
  - 2x High Quality (540 thread count) Bath Towel
  - 1x Handmade glycerine Soap - Lavendar (110gram bar)

inc GST Total \$430.00

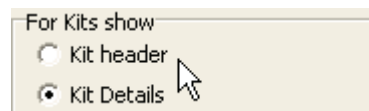
Regards,

Harry Rednapp  
 Sales Manager  
 DEMO Company Pty Limited  
 Ph: 02-9570 4696  
 Fax: 02-9580 8253  
 www.demo.com.au

### Kit Sales Reporting

The Stock Profit Report allows you to report on kits in two different ways:

- Use the kit header to report on the overall profitability of each kit (not each separate component).
- Use the detailed contents so that the report shows the profit made on each stock item used in each kit.



## Dynamic Kitting

The kit type (dynamic) and a default content for the kit is set up and maintained via the Jim2® Stock Record. Customers can return individual components of the dynamic kit for credit or replacement.

Dynamic Kitting allows your sales staff to add to or change kit content at a quote or job level using drag/drop/insert editing in the stock grid.

+	Stock Code	Description	Unit	Qty
1	MDOFFER.1	LUXURY MOTHERS DAY BUNDLE INC:	UNIT	1
2	DICKIES.T1	High Quality (540 thread count) Bath Sheet	UNIT	1
3	DICKIES.G1	High Quality Bathrobe (340 thread count)	UNIT	1
4	HANDMADE.GL.110	Handmade glycerine Soap - Lavendar (110gram bar)	UNIT	1
5				
6	DICKIES.F1	High Quality Face Washer(240x240)	UNIT	2

Simply click on the line number of any additional stock you would like included in the kit and drag it into the blue kit frame. Or, position your cursor inside the kit and use the insert key to add a line, then type (or scan) in the additional stock code.

+	Stock Code	Description	Unit	Qty
1	MDOFFER.1	LUXURY MOTHERS DAY BUNDLE INC:	UNIT	1
2	DICKIES.T1	High Quality (540 thread count) Bath Sheet	UNIT	1
3	DICKIES.G1	High Quality Bathrobe (340 thread count)	UNIT	1
4	DICKIES.F1	High Quality Face Washer(240x240)	UNIT	2
5	HANDMADE.GL.110	Handmade glycerine Soap - Lavendar (110gram bar)	UNIT	1
6				

Dynamic kit contents can also be changed by increasing stock line quantity, and by removing stock lines altogether.

## Static Kitting

The kit type (static) and the default content for the kit is set up and maintained via the Jim2® Stock Record. Customers cannot return individual components of the static kit for credit or replacement – they must return the whole kit.

Static Kitting is used when you have products that can be, or need to be manufactured on the fly – that is, you only make up these products if you have a definite sale.

A good example of this is kitting of scented oils. Each kit would contain a bottle, a cap, an amount of base oil and an amount of essential, scented oil. As orders are received, the product is manufactured. A customer could not return just the cap or just the base oil.

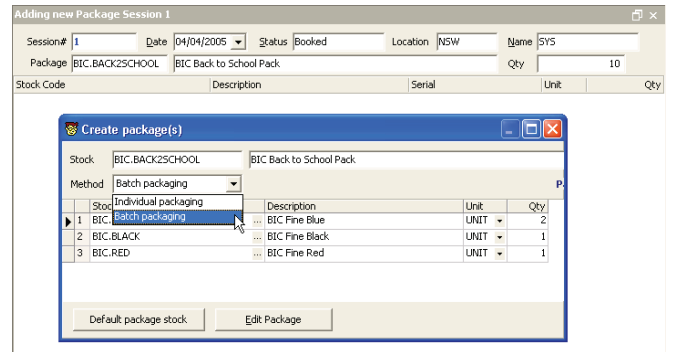
+	Stock Code	Description	Unit	Qty
1	LAVENDAR.100	100 ml Lavendar Oil - Almond oil base	UNIT	1
2	BASE.ALMOND	Almond Oil - millilitre	ML	90
3	ESS.LAVENDAR	Lavendar Essential Oil - millilitre	ML	10
4	BOTTLE.AMBER.100	Amber glass bottle - 100ml	UNIT	1
5	CAP.150	150mm bottle cap	UNIT	1
6				

## Packaging

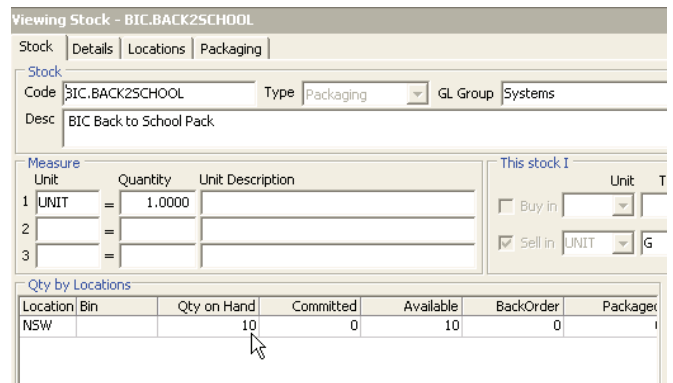
Packaging is in effect, creating a kit, then holding the created kit as stock on hand. When you create the package, Jim2® understands that the individual components have now been locked away (assigned to complete kits), and are unavailable for sale or use in another job. Jim2® shows the quantity of packaged kits on hand for sale.

Again, the kit type (packaging) and the default content for the kit is set up and maintained via the Stock Record.

A second packaging process is run to indicate that the building process has taken place. Jim2® will then manage serialised identification on individual packages or batch numbers on batch packaging.



The packaging process becomes part of your Jim2® workflow, where each packaging session can be monitored through defined status milestones.



At the end of the packaging process (finish), the quantity of packaged kits will be available as stock on hand.

See also: Stock Control Fact Sheet

