



Happen Business Pty Limited
 Suite 2, 29 - 33 Pitt Street
 PO Box 126, Mortdale NSW 2223 Australia
 p. +61 2 9570 4696
 f. +61 2 8569 1858
 w. www.happen.biz

Advanced Warehouse Management Jim2® Business Engine

Fact Sheet

Jim2® Advanced Warehouse Management

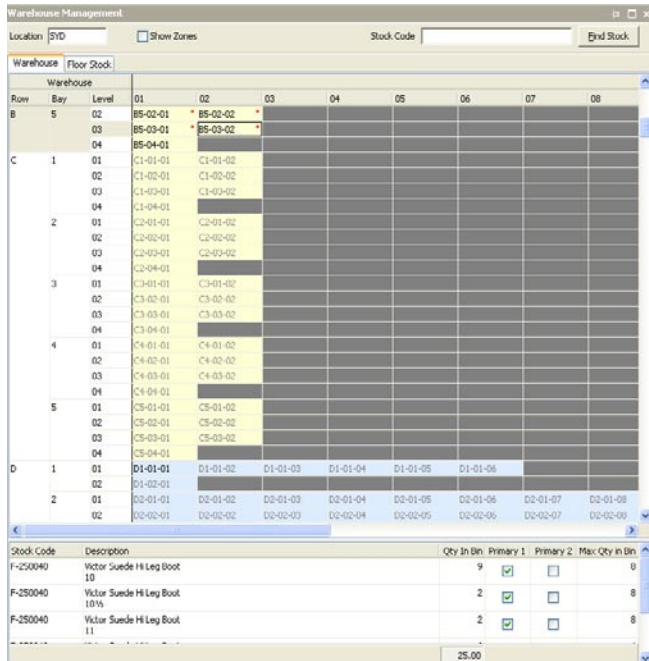
Gain control of your warehouse, deliver better customer service and keep labour costs under control with Advanced Warehouse Management by Happen Business Pty Limited. Set up or re-design your warehouse layout with ease, according to your business needs and see what is really happening with a visual look into your warehouse. Jim2® Advanced Warehouse Management gives you the tools to ensure you are better equipped to increase warehouse efficiencies, cut down on costs and improve customer satisfaction.

Warehouse Management

Walk around your warehouse without leaving your chair, with a visual snapshot of the warehouse on your PC. Allowing to automate previously labour intensive tasks, saving time and cutting costs.

Automated Tasks Include:

- Optimise your current storage space
- View your floor stock to see what has not been allocated to a bin
- Quickly find where you have empty bins
- Locate specific stock or serial number instantly



"We can now pick a job in 10 minutes instead of an hour thanks to Advanced Warehouse Management feature of Jim2"
 Phil Waller, General Manager - Australian Safety Specialists P/L

Coordinate Your Warehouse

With various different ways to store your stock (Branch, Location, Zone, Row, Bay, Shelf, Bin and Stock Attribute) you can:

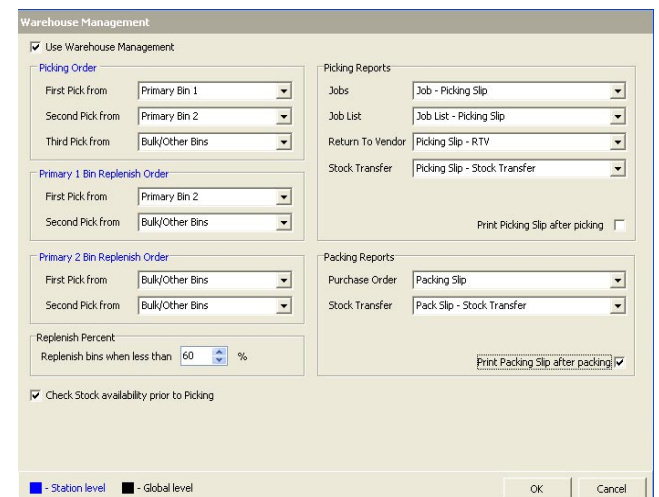
- Easily navigate within your warehouse
- Cut down on labour costs previously spent on searching for stock
- Know exactly where any piece of stock is, at anytime

Zones are an easy way to group similar or identical pieces of stock which have specific storage needs such as temperature requirements, high value or fast moving.

Efficient Use of Time

Auto Replenishment: keep your easy access bins filled at all times and reduce the need for picking staff to make unnecessary trips to bulk locations during the work day.

Cut down in labour costs previously spent on checking individual bins to see what needs refilling. Just run the Stock replenishment feature and Jim2® will show you.



Improved Workflow

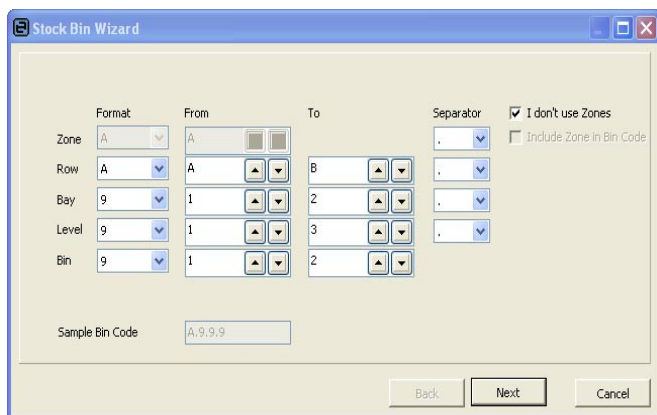
Speed up your workflow processes by knowing when your jobs/purchase orders are picked, packed or in the process of being so.

Picking Order: have an optimised sequence for the shortest route needed to pick as many orders as you want, all at once, and with minimal movement of goods.


Auto Picking: you can reserve stock for a job, knowing it will be there when you need it. Increase customer satisfaction with a guaranteed availability and shipping date.

Easy Warehouse Set Up

Using the Stock Bin Wizard you can set up an entire warehouse or redesign sections of your warehouse with the generation of bin codes in seconds.



This will eliminate the need to create bin numbers manually saving you hours of labour.



New Bin Code	Existing Bin Code(s)	Zone	Row	Bay	Level	Bin	Add Bin
A.1.1.1		A	1	1	1	1	<input checked="" type="checkbox"/>
A.1.1.2		A	1	1	2	1	<input checked="" type="checkbox"/>
A.1.2.1		A	1	2	1	1	<input checked="" type="checkbox"/>
A.1.2.2		A	1	2	2	1	<input type="checkbox"/>
A.1.3.1		A	1	3	1	1	<input type="checkbox"/>
A.1.3.2		A	1	3	2	1	<input type="checkbox"/>
A.2.1.1		A	2	1	1	1	<input checked="" type="checkbox"/>
A.2.1.2		A	2	1	2	1	<input checked="" type="checkbox"/>
A.2.2.1		A	2	2	1	1	<input type="checkbox"/>
A.2.2.2		A	2	2	2	1	<input checked="" type="checkbox"/>
A.2.3.1		A	2	3	1	1	<input checked="" type="checkbox"/>
A.2.3.2		A	2	3	2	1	<input checked="" type="checkbox"/>
B.1.1.1		B	1	1	1	1	<input type="checkbox"/>
B.1.1.2		B	1	1	2	1	<input type="checkbox"/>
B.1.2.1		B	1	2	1	1	<input type="checkbox"/>
B.1.2.2		B	1	2	2	1	<input type="checkbox"/>
B.1.3.1		B	1	3	1	1	<input checked="" type="checkbox"/>
B.1.3.2		B	1	3	2	1	<input checked="" type="checkbox"/>

Enhanced Stocktake

Cut down on staff costs. Minimise downtime and loss of income, due to warehouse closures for stocktakes.

Manage spot or rolling stocktakes at any time, and for as few, or as many, stock items as you wish, only locking the stock you wish to count.

Branch Level Warehousing

Other branches within your business will not be affected if they don't have Advanced Warehouse Management, this is ideal for businesses who have a smaller location. Also, with the option to set up one branch at a time, and over time, Advanced Warehouse Management is tailored to grow as your business grows.

Let Your Warehouse Manage Itself

With Advanced Warehouse Management, no longer are you relying on one person to remember everything as Jim2® will tell you.

No more 'i can't remember where the stock is' as Jim2® will tell whoever needs to know.

Anyone can locate stock, not just the warehouse manager.

Once the sales team make an order, any changes must be made at the warehouse level which will minimise errors and increase efficiency.

Seamless Integration

Advanced Warehouse Management is an option within Jim2® Business Engine, an all-in-one workflow and accounting software package.

This means everything that happens in the warehouse is linked to the rest of your business including job/order tracking, business processes, workflow and accounts, all of which you can view at anytime.

For more information on Advanced Warehouse Management and Jim2® Business Engine, please contact us at info@happen.biz, call (02) 9570 4696 or visit www.happen.biz.

See also:

- Stock Control
- Stock Procurement
- Stocktake
- Workflow



©2006 Happen Business Pty Limited (ABN 78 097 893 573). All rights reserved. Jim2 is a registered trademark of Happen Business Pty Limited. All other brand and product names are trademarks or registered trademarks of their respective companies.

All our products are designed and developed in Australia. Visit www.happen.biz for further information on Jim2 Business Engine or contact Happen Business directly on +61 2 9570 4696.

www.happen.biz

