



Happen Business Pty Limited  
Suite 2, 29 - 33 Pitt Street  
PO Box 126, Mortdale NSW 2223 Australia  
p. +61 2 9570 4696  
f. +61 2 8569 1858  
w. www.happen.biz

Jim2® Business Engine  
Version 2.17

# Release Notes

## Jim2® Business Engine V2.17 release notes – 18/05/06

### Official Release - Build 2252 with optional Advanced Warehouse Management functionality.

We are proud to announce the release of Jim2® BE version 2.17. This release includes many new features and enhancements and introduces our Advanced Warehouse Management functionality. This is a new Jim2® OPTION and is not included as part of your standard Jim2® BE subscription. Please contact Happen if you are interested in this new option.

Jim2® Business Engine has always excelled in improving workflow and business procedures, and version 2.17 strengthens this even further. This feature packed release includes many updates including: Advanced Warehouse Management, Watchout Notes, a new Journal stock type, line level stock reserving, batch invoicing, Stocktake enhancements and improved performance, just to mention a few.

**Just a special note for all our new sites** – welcome! These release notes should provide some insight into the sort of changes that are introduced during version upgrades, and how YOU can take advantage of them at your site. With easy to follow screen shots, look through each one carefully to see if they can add functionality to your site.

Features include...

- NEW - Advanced Warehouse Management (new option)
- NEW - Watchout Notes
- NEW - Batch Invoicing
- NEW - Line Level Stock reserving
- NEW - Stock Bin Wizard
- NEW - Option - Check for duplicate Cust Ref#
- NEW - Option - Link Purchase Orders to invoiced Jobs
- NEW - Journal Stock type
- NEW - Stock Sales tab
- NEW - Stock Committed tab
- NEW - Show List Price (RRP) including GST
- NEW - Return to Vendor RA# field
- NEW - Report sort orders

Additional enhancements

- Updated Stocktake sessions now allow easy spot Stocktakes
- Updated Stock Profit reports
- Updated Security settings

We have also included the following improvements and fixes

- Sales Register - TF column in Sales Register grid
- General Journal - You can use the G tax code when entering a payroll journal (tax codes P and Q)
- Jobs - Recalculation of stock line prices to any price level (right click on stock grid)
- CardFile List - Added the functionality to delete Cardfiles (similar to Stock list)
- Creditors/Debtors - Displays 'Tran Date' column (hidden by default) on both trees
- Stock - Browser button on RRP field has been removed. Now automatic.
- Stock Select - Displays 'Quantity on Order'
- Improved Calculator functionality
- Reports - Invoice from Sales Register - Enhancements to auto email and select only unpaid invoices.
- Reports - Cheque Remittance Report can now group via the Vendor

**Make sure you read up on these changes to Jim2® – there may be one or many you can use to enhance Jim2® BE even further!**

## Technical Information & Requirements

### Windows Vista Support

Windows Vista (all editions) is now supported by Happen and is compatible with Jim2<sup>®</sup> BE v2.17.

### Database V141

To upgrade from Jim2<sup>®</sup> V2.16 to Jim2<sup>®</sup> V2.17 backup your database then run **jim2upgrade\_217\_2252.exe** from your server.

The Jim2<sup>®</sup> update program will automatically update existing version 136 or higher databases to the current version 141. That is – by running the Version 2.17 upgrade, you will have access to these new features and functions WITHOUT affecting your existing Jim2<sup>®</sup> records.

To manually update a database you have restored:

1. Use the Jim2<sup>®</sup> Update program and select the **Jim2update136-141.pas** script, from the UpdateFiles folder in your Jim2<sup>®</sup> folder.
2. New reports, scripts etc can be installed by importing the **jim2reports\_v217.jrpt** file via the Jim2<sup>®</sup> Report Designer.

Both these files can be located in the UpdateFiles subdirectory after running the **jim2upgrade\_217\_2252.exe** upgrade program.

### Jim2Server V2.17

Jim2Server has been updated in support the new features in Jim2<sup>®</sup> v2.17.

### Microsoft SQL Server

Jim2<sup>®</sup> now fully supports all versions of Microsoft SQL Server from version 2000 onwards including...

SQL Server 2005 Enterprise Edition (both 32 and 64 bit versions)

SQL Server 2005 Standard Edition (both 32 and 64 bit versions)

SQL Server 2005 Workgroup Edition

SQL Server 2005 Express Edition

Microsoft SQL Server 2000 (with service pack 2 or greater)

Microsoft MSDE 2000 (with service pack 4 or greater)

Please also note that Microsoft SQL version 7 is no longer supported by Happen.

## Advanced Warehouse Management - New Feature (Optional)

Gain control of your warehouse, deliver better customer service, and keep labour costs under control, with Jim2® Advanced Warehouse Management.

Set up or re-design your warehouse layout with ease. Generate bin codes in seconds. Use the visual snapshot tool to see what is currently stored in your warehouse and view any empty bins.

The Stock Replenishment Feature will keep primary bins filled at all times, reducing the frequency of staff needing to refill bins. Other great features include; reserving stock items for a job, optimised picking order sequence, and the ability to manage spot or rolling stocktakes at anytime.

Jim2® Advanced Warehouse Management will give you the tools needed to ensure you are better equipped to increase warehouse efficiencies, cut down on costs, and improve customer satisfaction.

See the Jim2® Advanced Warehouse Management fact sheet for more details.

The screenshot shows the 'Warehouse Management' window with 'Location' set to 'SVD'. The main area is a grid titled 'Warehouse' with columns for 'Row', 'Bay', 'Level', and bin codes (01-08). The grid shows various bin codes like B5-02-01, C1-01-01, etc. Below the grid is a table with columns: Stock Code, Description, Qty In Bin, Primary 1, Primary 2, and Max Qty in Bin. The table lists three entries for 'Victor Suede Hi Leg Boot' with different sizes (10, 10½, 11) and quantities (9, 2, 2).

| Stock Code | Description                  | Qty In Bin | Primary 1                           | Primary 2                | Max Qty in Bin |
|------------|------------------------------|------------|-------------------------------------|--------------------------|----------------|
| F-250040   | Victor Suede Hi Leg Boot 10  | 9          | <input checked="" type="checkbox"/> | <input type="checkbox"/> | 8              |
| F-250040   | Victor Suede Hi Leg Boot 10½ | 2          | <input checked="" type="checkbox"/> | <input type="checkbox"/> | 8              |
| F-250040   | Victor Suede Hi Leg Boot 11  | 2          | <input checked="" type="checkbox"/> | <input type="checkbox"/> | 8              |

## Watchout Notes - New Feature

Watchout Notes is a great new feature that allows prompts and messages to appear, based on a particular event occurring.

Watchout Notes are available on Jobs, Quotes, Purchase Orders, Returns To Vendors, and Returns from Customers. Notes can appear when adding or changing customer, vendor, ship or from, or when adding stock, finishing or invoicing. You can choose to display the note for a particular CardFile or Stock, or for all.

Watchout Notes also allow you to optionally specify 'Valid From/To' dates during which you wish the note to appear. This is useful for specials, season greetings, catalogue events etc.

Using Watchout Notes, you can display any sort of message. For example, when adding stock to a Job, display 'Would you like batteries with that?', or when Finishing a Purchase Order 'Make sure you double check the totals as this supplier has trouble adding up'.

The dialog box 'Adding Watchout Note #5' has the following fields: 'On Job' (dropdown), 'when Cust# changes' (dropdown), 'for CardFile ABECK' (text), and 'Active' (checked checkbox). Below these are 'Valid from' and 'to' date fields. The main text area contains the message: 'We do not accept cheques from this customer. Cash or Credit Card only. Please see Accounts for further info...'. At the bottom are 'Copy', 'OK', and 'Cancel' buttons.

## The Watchout Notes List

From the main menu click **Tools > Watchout Notes**. The Watchout Notes list will then appear. Click run to generate a list of Watchout Notes.

### Adding a new Watchout Note

You can add a new Watchout Note either from the Watchout Notes List accessible via **Tools > Watchout Notes** from the main menu or from the Watchout Notes tab on either a Cardfile or Stock.

### Displaying Watchout Notes based on dates.

When adding or editing a watchout note you can specify a 'Valid From/To' date range that you wish that Watchout Note to be valid for. You can specify either the 'From Date' or the 'To Date' or both dates, allowing the Watchout Note to be displayed during this date range.

This is extremely useful for timed events like catalogue releases, change of address reminders, price change reminders etc.

| Note # | Note On              | When      | Note For | Code | Valid From | Valid To   | Note   | Active                              |
|--------|----------------------|-----------|----------|------|------------|------------|--|-------------------------------------|
| 1      | Return From Customer | Add Stock | Stock    |      |            |            | The Customer card code has changed, please make sure this is the right customer :) | <input checked="" type="checkbox"/> |
| 2      | Job                  | Add       | Job      |      | 1/05/2007  | 30/06/2007 | Remember to give the customer the new May/June EOY catalogue                       | <input checked="" type="checkbox"/> |
| 3      | Job                  | Add Stock | Stock    | BOX  |            |            | Check if power supply will match motherboard correctly                             | <input checked="" type="checkbox"/> |
| 4      | Quote                | FINISH    | CardFile |      |            |            | If this quote has been accepted please create a Job.                               | <input checked="" type="checkbox"/> |

Buttons: Add, Edit, Delete, Run, Cancel

List: 0 | Record 1 of 4

## Job - Line Level Stock reserving

Jim2® v2.17 now allows line level reserving of stock from within a Job. Once reserved, stock is exclusively held for that Job and can't be sold, picked or reserved on other Jobs. You can also optionally select serial numbers either prior to, or after, Line Level reserving.

So there are now three distinct ways you can reserve stock.

### Committed

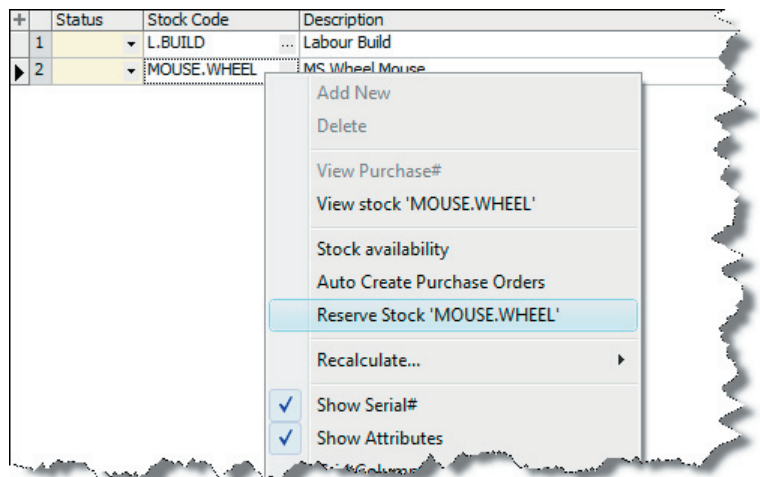
Committed can be thought of as a 'Soft Level' reserve. Committed stock is simply stock that is allocated to Jobs prior to yours. Under Tools>Options>Stock you can choose to exclude committed from the amount of stock available. For example you have 10 in stock with 6 on prior Jobs, so the total stock available to sell is 4. The committed qty can be excluded by either the Jobs Date Due or Date In, meaning either by when a Job is required to ship or by the order that Jobs are entered. Users can sell stock this is committed on prior Jobs if they have security Security>Jobs>Allow Sell committed Stock.

### Line Level Reserve

Line Level Reserve can be thought of as a 'Medium Level' reserve. Line Level Reserve allows you to reserve stock for a Job and will not allow anyone else to sell that stock on any other Job regardless if has been committed. In the above example there would only be 4 available to sell. Line Level Reserve does not remove the stock from the Purchase Order but does exclusively reserve the stock for that Job and that job alone.

### Job Reserve

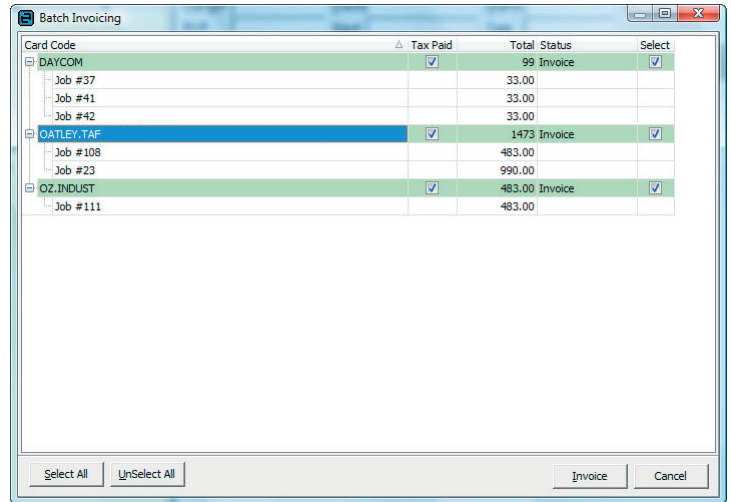
Job Reserve can be thought of as a 'Hard Level' reserve. Reserve reserves the entire stock on a job and allocates the stock from the Purchase order. If the stock is serialized the serial numbers must be selected prior to reserving the Job. This is similar to marking a Job as READY, but unlike READY, except for the stock grid, the Job can still be edited.



## Batch Invoicing - New Feature

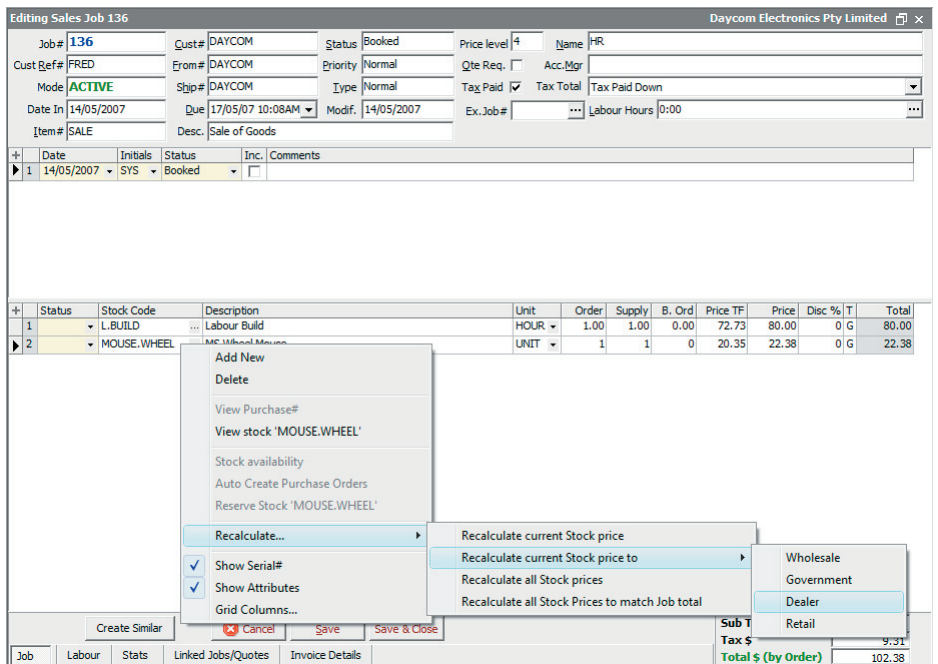
You can now invoice multiple Jobs from a Job list for multiple customers at the same time. Simply bring up a list of Jobs marked READY to invoice and click the Invoice icon. The Batch Invoicing screen will then appear and allow you to select which customers you wish to invoice. Clicking the Invoice button will then generate a separate Invoice for each Customer selected.

If you have specified a single customer in your Job list the Batch Invoicing process will be bypassed as per a normal multi-job invoice.



## Jobs - Recalculation of stock line prices to any price level

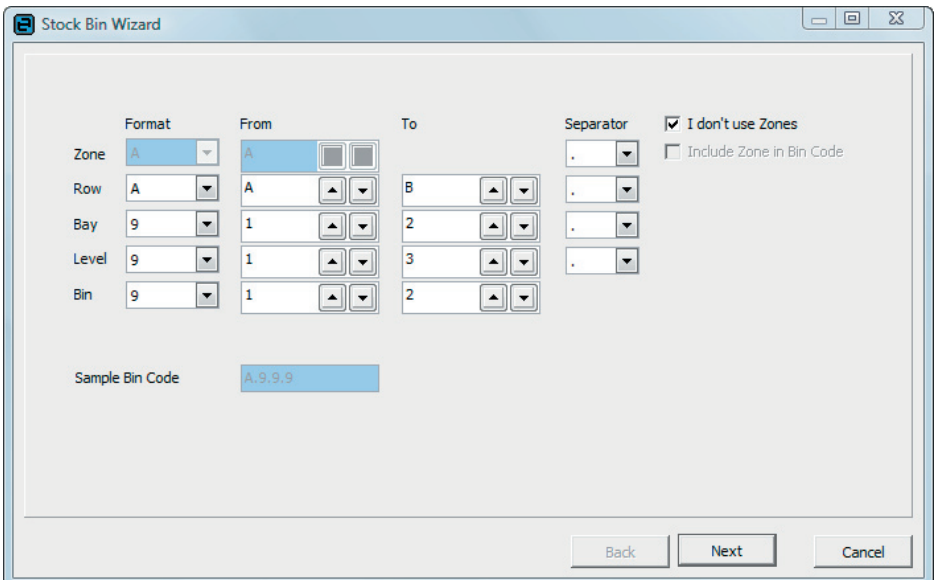
You can now recalculate the price of a line of Stock on a Job to any price level simply by right clicking on the line and selecting Recalculate... > Recalculate current Stock price to > Price Level xxx.



## Setups - New Stock Bin format and Stock Bin Wizard

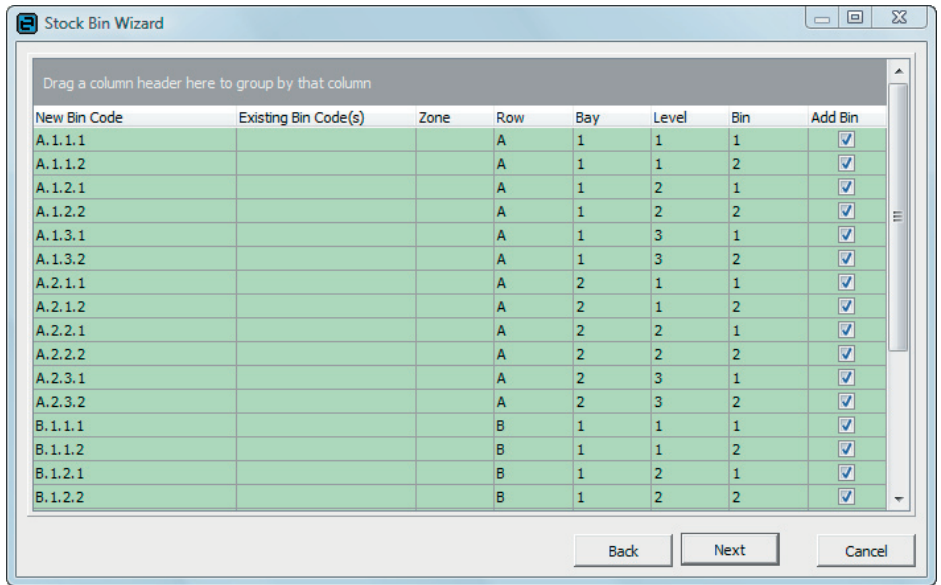
Jim2<sup>®</sup> v2.17 now allows you to associate a Stock Bin with a Zone, Row, Bay, Level and actual Bin number. This feature is used heavily by the new Advanced Warehouse Management option but can be used regardless. This allows Stock Bins and, of course, the Stock within those Bins to be accessed by Row, Bay, Zone etc for all operations including Picking, Packing and Stocktakes. Although normally used for within a warehouse environment, the format can be used anywhere stock is stored including service and retail businesses.

The new Stock Bin Wizard that allows you to easily generate Stock Bins in bulk. To access select **Tools > Setups > Stock Bins** from the main menu. Select the Location you wish to create the Stock Bins for and click the 'Stock Bin Wizard' button. The Stock Bin wizard will then appear. Enter the range of Bins you wish to generate and the separators you wish to use as part of your 'Qualified Bin Code'.



Click 'Next' and the list of Bins to be created will be displayed. Any conflicts with existing Bins will be displayed. Click 'Next' to generate the Bins.

You may need to run the Stock Bin Wizard several times depending on your storage layout. For example if you storage had 2 bins per shelf on all but the top shelf you would run the wizard once for the bottom shelves, and then again for the top shelf.



### Options - Check for duplicate Cust Ref#

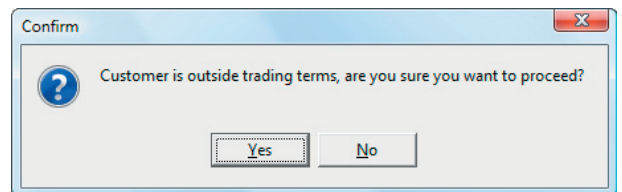
This new option checks for duplicate Cust Ref# for the same Cust# on Jobs making it easy to pickup duplicate Customer purchase order entry. If a duplicate is detected a warning message will be displayed. This option must be enabled in **Tools > Options > Job**.

### Options - Link Purchase Orders to invoiced Jobs

This new option allows you to link Stock from a Purchase Order to an already Invoiced Job. Upon saving the Purchase Order a message will be displayed indicating that the linked Stock will be added to an Invoiced Job @ \$0.00. This option is useful for adding related costs to a Job like freight or external labour after the Job has been invoiced. This option must be enabled in **Tools > Options > Purchase**.

### Options - Check if Customer is outside trading terms

This new option if enabled will prompt you if the customer you are Invoicing is outside their trading terms. That is they are under their credit limit by have unpaid overdue invoices. You can only continue Invoicing if you have Security to do so (see Updated Security Settings). This option must be enabled in **Tools > Options > Jobs > Invoice**.

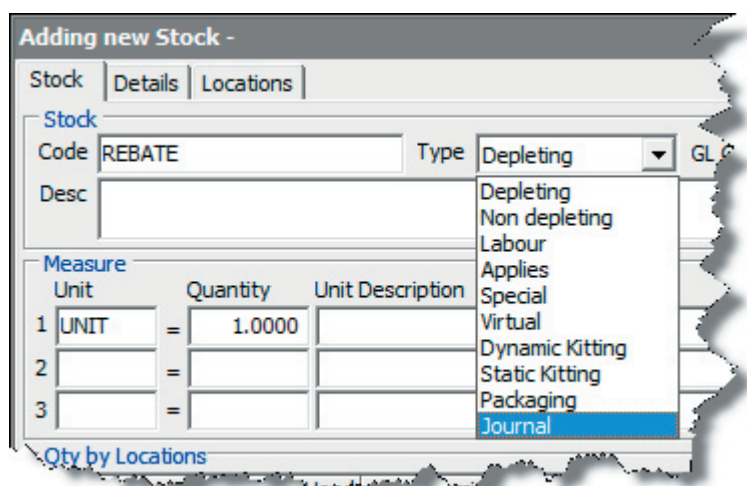


### Stock - Journal Stock type

Stock now includes a new 'Journal' stock type for use on Jobs and Quotes. This stock type allows you to invoice either positive or negative amounts directly to any non-linked general ledger account and is perfect for invoicing non stock items such as discounts, advertising, rebates etc.

Whilst you can link a Journal Stock to any existing Stock GL Group it is suggested to create a new Stock GL Group of stock type 'Labour, Applies, Journal' and link the Income Account to the General Ledger code you wish to use. Although typically you would link this to an income account, you can link it to any General Ledger account classification.

Unlike other Stock types, you can enter either a positive or negative \$ figure, however the total for the Job/Quote cannot be less then \$0.00.



## Stock - Sales tab

The Stock form now includes a Sales tab. The Sales tab lists all sales and returns related to that Stock. You can then easily right-click and view the original source document. The Sales tab also features our new filtering, allowing you to easily filter this sales information by almost any criteria.

## Stock - Committed tab

The Stock form now includes a Committed tab. The Committed tab lists all Jobs that have that Stock committed. You can then easily right-click and view the original source document. The Committed tab also features our new filtering, allowing you to easily filter this sales information by almost any criteria.

| Type    | Card Code | Date       | Invoice# | Ref# | Loc. | Qty | Unit | Price TF | Price TP | Total  |
|---------|-----------|------------|----------|------|------|-----|------|----------|----------|--------|
| Invoice | JIM2      | 11/07/2004 | 15       | 47   | NSW  | 4   | UNIT | \$0.00   | \$0.00   | \$0.00 |

## Stock - Show List Price (RRP) including GST

Stock Recommended Retail Price (RRP) has been renamed to List Price and is now displayed and entered as either Inc or Ex GST, depending on your global options. This is reflected in many places, including the Stock Selection screen and Stock List.

## Return to Vendor - RA# field

Return To Vendor (RTV) now includes a RA# field. This allows you to record both the RA# required to return faulty goods and the Credit Note# upon receiving the credit.

## Stocktake sessions now allow easy spot Stocktakes

Jim2<sup>®</sup>'s Stocktake feature has been enhanced to allow spot or rolling Stocktakes at a Zone, Row, Bay, Level or Bin level. You can now filter your Stocktake sessions based on the location of the Stock within your business. To make full use of this feature each stock should be assigned a Stock Bin via the Locations tab on the Stock form. The Stock Bin, having previously been assigned a Zone, Row, Bay, Level and Bin ID, allows for easy Stocktakes of areas of your warehouse or stock location.

Stocktake sessions has also been enhanced to handle the new Advanced Warehouse Management, in which case, Stocktakes for locations that have AWM enabled must be counted at a Bin level.

## Updated Security settings

The following additional security settings have been added.

### Security > Jobs

- Allow to sell from all Locations (regardless of branch)
- Allow Invoicing when Customer is outside trading terms

### Security > Purchases

- Edit other users comments
- Delete other users comments
- Allow link stock to Invoiced Jobs

### Security > Stock

- View floor cost
- Allow to Pick Stock
- Allow to Unpick Stock
- Allow to Pack Stock
- Allow to Unpack Stock

### Accounts > Debtors

- Discounts

### Security > Tools > Watchout Notes

- Add
- Edit
- Delete

**Note: Please make sure you update you users security settings as they are enabled by default.**

## Sales Register - TF column in Sales Register grid

The Sales Register now includes a Price TF (Ex GST) column.

## General Journal - Payroll Journals

You can use the G tax code when entering a payroll journal (tax codes P and Q)

## CardFile List - Added the functionality to delete Cardfiles (similar to Stock list)

Cardfile List now includes the ability to delete Cardfiles by right-clicking on the list and selecting either 'Delete Current CardFile' or 'Delete all CardFiles in List' from the popup menu.

Note: Only Cardfiles that have had no transactions will be deleted.

## Creditors/Debtors - Tran Date column

Both Creditors and Debtors have been updated to show both the document and transaction date of the transaction. This allows easy tracing of the transaction when backdating or forward dating payments, invoices, purchases, allocations etc. To view the transaction date, click on the expand button (+ sign) in the top lefthand corner of 'Allocate Payments' grid.

## Creditors/Debtors - Unallocate at detail level

Both Creditors and Debtors have been updated to allow unallocation of a payment at a detail level. Previously you could only unallocate the entire credit, which was annoying when you only needed to unallocate one payment out of the 20 applied.

Clicking the actual allocation and clicking the 'Unallocate' button will unallocate that single allocation. Clicking on the Payment header and clicking the 'Unallocate' button will unallocate all allocations.

## Stock Select - Quantity on Order

The Stock Select screen has been updated to show the quantity of Stock that is currently on order.

## Improved Calculator functionality

Jim2<sup>®</sup>'s Calculator feature has been enhanced. When pressing the 'Accept' button the calculator will now attempt to paste its total into the currently focussed control. Previously the Calculator would only paste its result when activated from a Job or Purchase Order.

## Reports - Sort order feature

Reports can now be given a sort order. This allows the order of reports in the Report Toolbar to be sorted in your preferred order without having to rename them. To change change a report's sort order, open Report Designer and select the report you wish to reorder. Click the 'Set Sort Order' icon and enter a number to indicate the order that you wish the report to appear. You can set the sort order on all reports including system reports. The sort order will not be updated next time a report is imported.

## New Reports

The following reports have been added or updated in Jim2<sup>®</sup> Version 2.17

### **Management / Reports / Stock Reports / Stock Profit**

This report now includes a new 'Summary Report' option.

### **Jobs / Sales Register / x - Invoice From List (Multi)**

This report features enhancements to auto email and a new 'Select only unpaid Invoices' option.

### **Accounts / Creditors List / Creditors / Cheque Remittance**

This report now allows you to group the report by the 'From#' on the Purchase Orders that are been paid. Great for users that use Jim2<sup>®</sup>'s central billing feature.

## Application Level Performance Diagnostics (ALPD)

This unique feature allows Jim2<sup>®</sup> to be run in a special diagnostic mode. All queries and access to the database is uniquely identified and logged in real-time externally to the SQL database allowing measurement of both their timing and frequency. This information allows Happen to analyse and identify any site specific network issues and optimise database performance.

## Improved Performance

Jim2<sup>®</sup> v2.17 marks the completion of our conversion of Jim2<sup>®</sup> to the latest version of our internal development tools. Some of the features include improved memory management, better window management, report and Jim variable caching, and faster and more powerful grids.

## Native Microsoft SQL Support

Jim2<sup>®</sup> v2.17 now supports Microsoft's latest native SQL drivers, improving overall database access speed by approximately 5%. Jim2<sup>®</sup> automatically detects and takes advantage of native SQL support if installed. You can check if your system is running Native SQL by checking the ADO provider on the System Info tab in Jim2<sup>®</sup>'s 'About' screen (help menu).